

TREES FOR ALL

Municipal Summary **Pelham**

PROGRAM OVERVIEW

“Trees for All” is a tree planting program proposed for both public and private lands in both Urban and Rural areas within the Niagara Peninsula Watershed. It is supported by a broad local partnership of government and other organizations lead by the NPCA. The aspired multi-year high volume program is anchored by an existing inventory of tree planting opportunities solicited during the implementation of the 2022 2BT Capacity Building Grant. This phase of the program development identified 800 ha of potential planting area across the watershed in excess of 700 private and 200 public properties.

GOALS



Plant 70,000 trees and shrubs on both public and private lands, contributing a total of 350,000 native trees and shrubs to the Niagara Region Watershed over a comprehensive 5-year span (2024-2028).



Provide residents with subsidized trees for their property as nature-based solutions to mitigate climate change, enhance biodiversity and increase local habitats.



Provide turn-key planting services that value appropriate site preparation and tree planting prescriptions and long-term maintenance and monitoring to ensure the highest survival rates within control.

Timeline

Annual Milestones

JAN-FEB

Site plans & nursery allocations finalized. Lasted deadline for submitting properties for upcoming planting season.



SEPT-OCT

Survival assessments conducted. Site visits begin for next planting season.



DEC

Post-plant report submitted to funders. Site plans prepared submitted to forester for review.



APR-JUN

Site preparatons carried out, planting starts late April and ends early June.



OCT-NOV

Sites visits for next planting season complete and confirmed.



CITY OF PELHAM

ESTIMATED TREE INVENTORY

PUBLIC LAND (RURAL & URBAN)	HIGH	MEDIUM	LOW	TOTAL
# SITES	6	14	38	58
# TREES	3,250	6,640	240	10,130

Both Rural and Urban properties are included in the above totals.

PRIVATE LAND (RURAL ONLY)	HIGH	MEDIUM	LOW	TOTAL
# SITES	3	9	36	48
# TREES	4,500	7,200	5,320	17,020

Please note, only Rural High and Medium priority sites have been considered for implementation at this point due to current available funding options, and only those numbers were used in the financial summary.

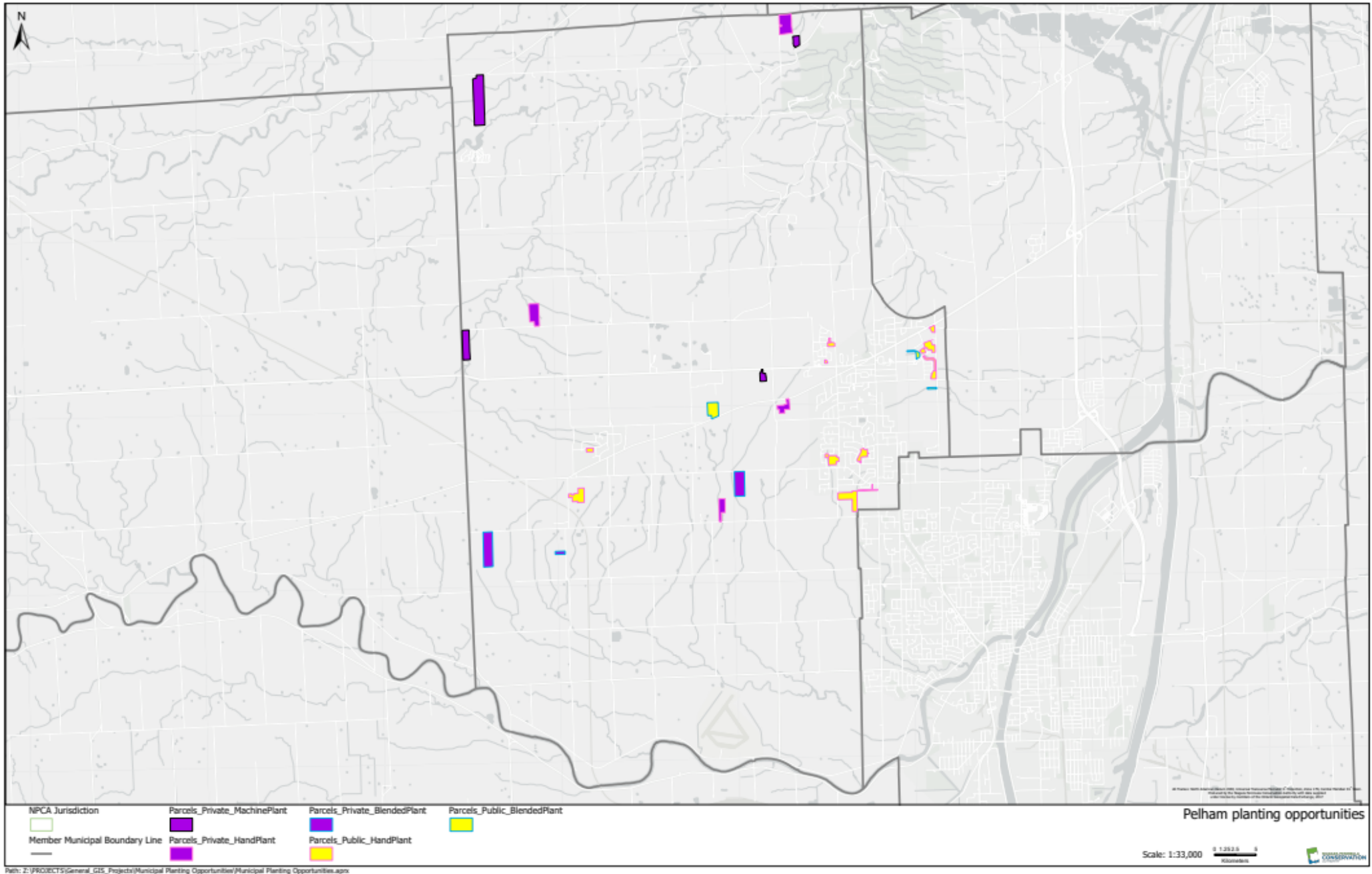
PRIORITY RATIONALE - PUBLIC

PUBLIC LAND	HIGH	MEDIUM	LOW
QUANTITY	500 + TREES	< 500 TREES - SOMETIMES MORE	ALL SITES TREES 1< 500
PLANTING METHOD	MACHINE OR HANDPLANT	MACHINE OR HANDPLANT	HANDPLANT
SITE PREP REQUIRED	MINIMAL SITE PREP	SOME SITE PREP OR PLANTING CONCERNS	SIGNIFICANT SITE PREP
ACCESS	EASY ACCESS	ACCESS MAY BE DIFFICULT	ACCESS NOT POSSIBLE/DIFFICULT
PLANTING AREA	POTENTIAL PLANTING AREA EASY TO DEFINE	POTENTIAL PLANTING AREA NOT EASILY DEFINED BUT MULTIPLE OPTIONS POSSIBLE	CALIPER & REFORESTATION PROJECT TYPES

PRIORITY RATIONALE - PRIVATE

PRIVATE LAND	HIGH	MEDIUM	LOW
QUANTITY	3 + ACRES	1-3 ACRES	< 1 ACRE
PLANTING METHOD	MACHINE PLANT	MACHINE AND/ OR HANDPLANT	HANDPLANT
SITE PREP REQUIRED	MINIMAL SITE PREP	SOME SITE PREP OR PLANTING CONCERNS	SIGNIFICANT SITE PREP
ACCESS	EASY ACCESS	ACCESS MAY BE DIFFICULT	ACCESS NOT POSSIBLE/DIFFICULT
PLANTING AREA	POTENTIAL PLANTING AREA EASY TO DEFINE	POTENTIAL PLANTING AREA NOT EASILY DEFINED BUT MULTIPLE OPTIONS POSSIBLE	CALIPER & REFORESTATION PROJECT TYPES

INVENTORY MAP - PUBLIC & PRIVATE



TREE STOCK TYPE OVERVIEW - PUBLIC

Only High and Medium Priority Sites are included below.

PUBLIC LAND	URBAN	RURAL	TOTAL
# POTTED SITES	5	1	6 SITES
# POTTED TREES	2,370	1,480	3,850 TREES

PUBLIC LAND	URBAN	RURAL	TOTAL
# BAREROOT SITES	3	1	4 SITES
# BAREROOT TREES	4,500	1,540	6,040 TREES

At present, only Rural Bareroot are being considered for implementation due to current available funding options. Urban opportunities are on hold, but there a few funding opportunities that may be available to us soon.

TREE STOCK TYPE OVERVIEW - PRIVATE

Only High and Medium Priority Sites are included below.

PRIVATE LAND	URBAN	RURAL	TOTAL
# POTTED SITES	2	N/A	2 SITES
# POTTED TREES	Unquantified	N/A	0

PRIVATE LAND	URBAN	RURAL	TOTAL
# BAREROOT SITES	N/A	12	12 SITES
# BAREROOT TREES	N/A	11,700	11,700 TREES

At present, only Rural Bareroot are being considered for implementation due to current available funding options. Please note that not all private inventory has been scheduled for planting as the current inventory exceeds overall program targets and was thus scaled back.

FINANCIAL SUMMARY

TREES FOR ALL - CONSOLIDATED PROGRAM	2024	2025	2026	2027	2028	TOTAL
Program Cost	954,512	995,226	998,834	1,012,817	1,041,064	5,002,453
Less						
Tree Canada	127,200	134,900	137,400	7,500	7,500	414,500
Forests Ontario	52,800	48,975	48,850	168,850	172,225	491,700
NPCA (In kind)	74,738	76,420	78,139	79,897	81,696	390,890
Landowner	152,892	125,565	126,021	127,785	131,350	663,613
Municipal Subsidy	546,882	609,366	608,424	628,785	648,293	3,041,750
15 municipalities	36,459	40,624	40,562	41,919	43,220	202,783
% of total prog cost (average)	3.82%	4.08%	4.06%	4.14%	4.15%	4.05%

NPCA - SUMMARY BY MUNICIPALITY - TREES FOR ALL				
PELHAM	TOTAL			
	# Trees	Cost/Funding Mechanism		
Public Lands		Pelham	Other Sources	Total
- Urban				-
- Rural	1,540	11,886	10,127	22,013
- Total	1,540	11,886	10,127	22,013
Private Lands	# Trees	Pelham	Other Sources	Total
- Urban	-	-	-	-
- Rural	6,257	48,291	41,147	89,438
- Total	6,257	48,291	41,147	89,438
TOTAL - PELHAM	7,797	60,177	51,274	111,451

Notes:

1. Analytics include estimated activity for the entire duration of the Trees for All initiative (5 years) based on submitted inventory, prorated to program capacity.
2. Full service tree planting project at reduced cents on the dollar, including plant material, site prep, monitoring, after care and implementation.
3. Each municipality's annual contribution represents 4.05% (average) of total program costs.

4. Annual contribution from Pelham:	2024	11,327
	2025	11,931
	2026	11,891
	2027	12,327
	2028	12,701
	Total	60,177

Assumptions:

- a) Focus is on rural stream only.
- b) Participation in the program by all 15 municipalities.
- c) Municipal support for both public and private sites.
- d) Based on High and Med priority site estimates only



THANK
YOU!



Niagara Peninsula
CONSERVATION
nature for all