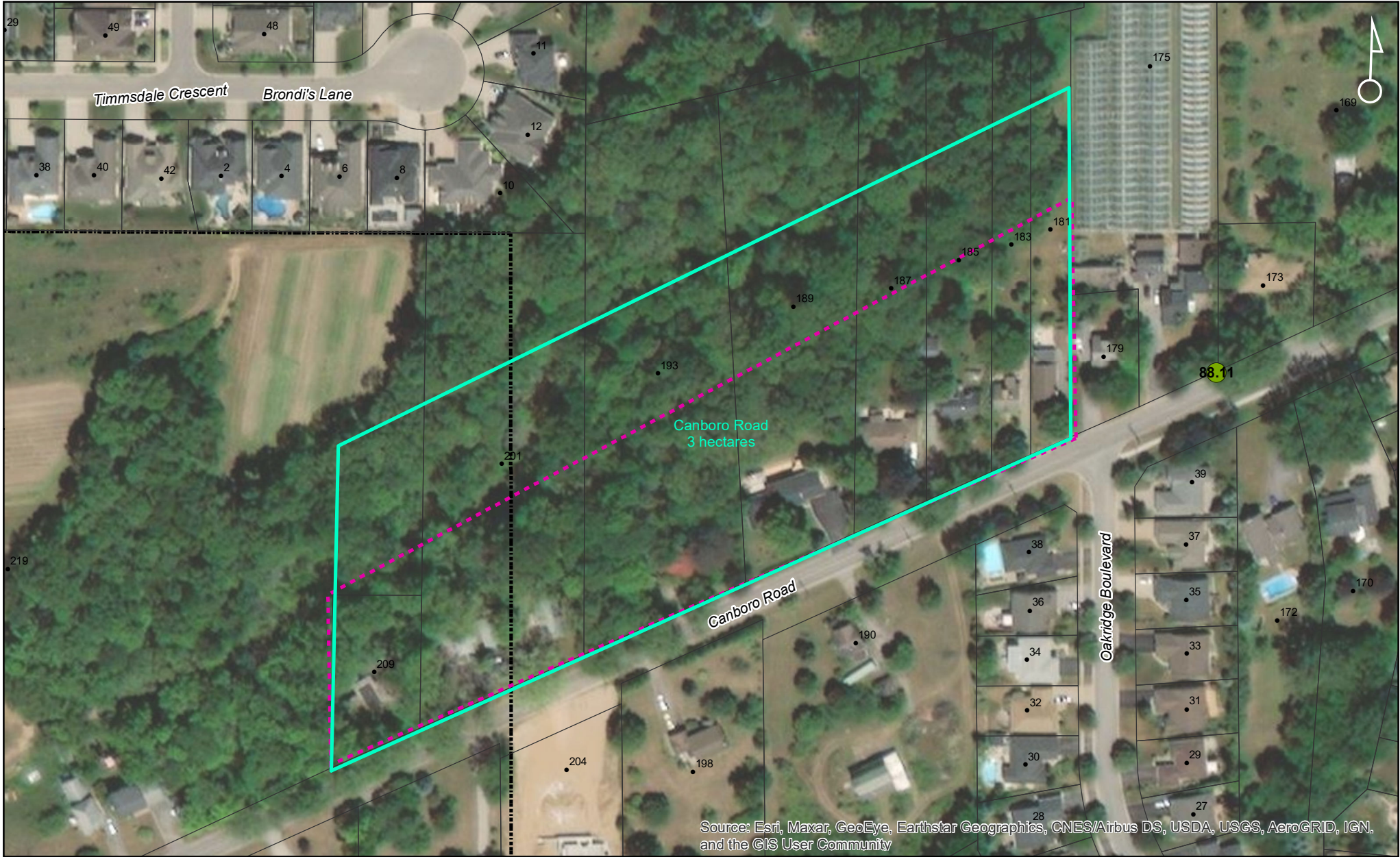
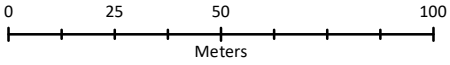


Canboro Road



Source: Esri, Maxar, GeoEye, Earthstar Geographics, CNES/Airbus DS, USDA, USGS, AeroGRID, IGN, and the GIS User Community

Town of Pelham LDD Moth Aerial Spray Program



NAD 1983 UTM Zone 17N
Produced by Lallemand Inc./BioForest

2022 Defoliation Forecasts

Forest Plots (em/ha)

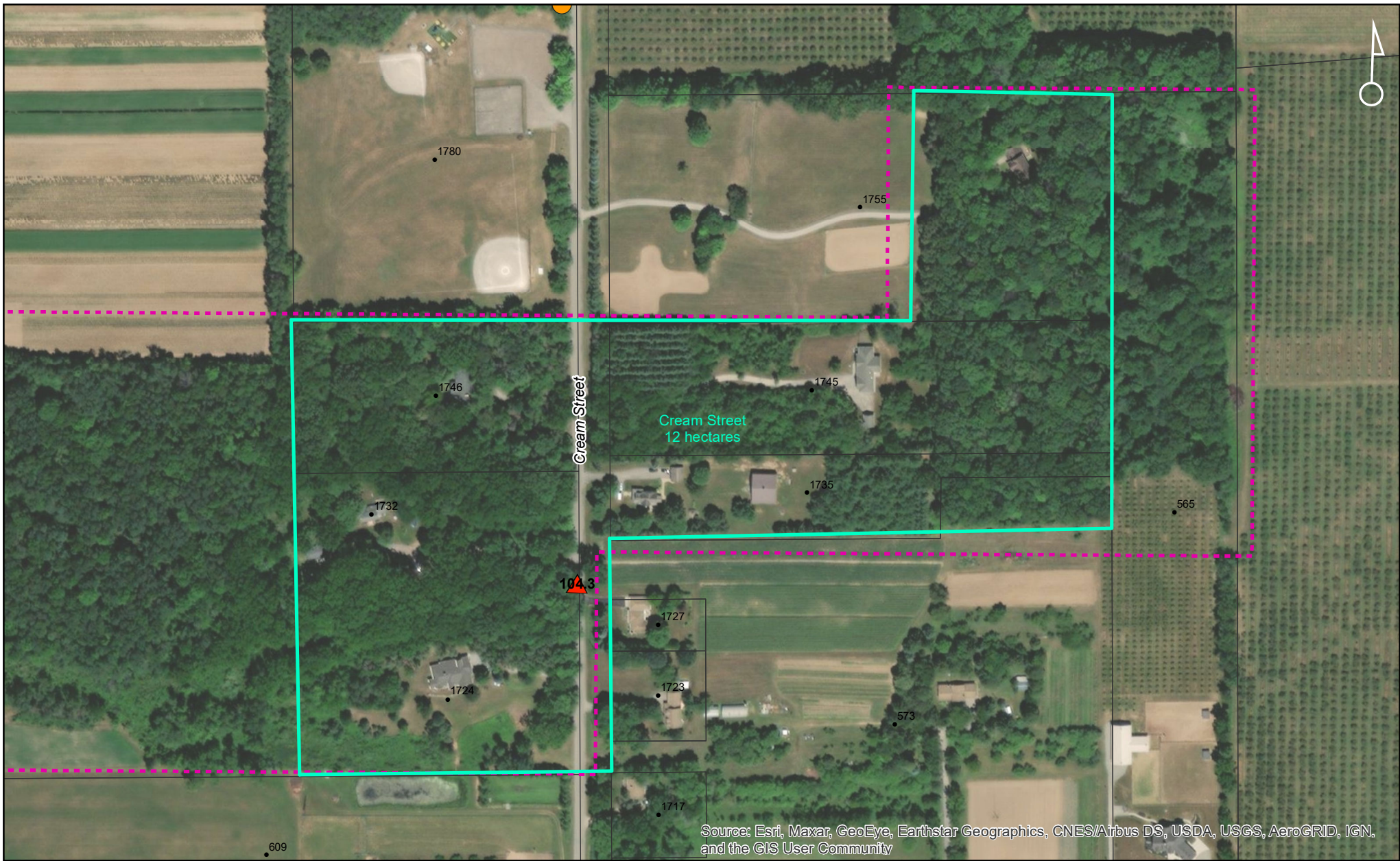
- ▲ Nil (0)
- ▲ Light (1-1250)
- ▲ Moderate (1251-3750)
- ▲ Heavy (3751-5000)
- ▲ Severe (5001+)

Street Plots (em/tree)

- Nil (0)
- Light (1-10)
- Moderate (11-40)
- Heavy (41-100)
- Severe (101+)

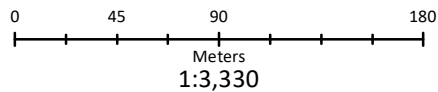
- PelhamSprayBlocks_Feb23
- PelhamSprayBlocks_Original
- AssessmentParcels

Cream Street



Source: Esri, Maxar, GeoEye, Earthstar Geographics, CNES/Airbus DS, USDA, USGS, AeroGRID, IGN, and the GIS User Community

Town of Pelham LDD Moth Aerial Spray Program



NAD 1983 UTM Zone 17N

Produced by Lallemand Inc./BioForest

2022 Defoliation Forecasts

Forest Plots (em/ha)

- ▲ Nil (0)
- ▲ Light (1-1250)
- ▲ Moderate (1251-3750)
- ▲ Heavy (3751-5000)
- ▲ Severe (5001+)

Street Plots (em/tree)

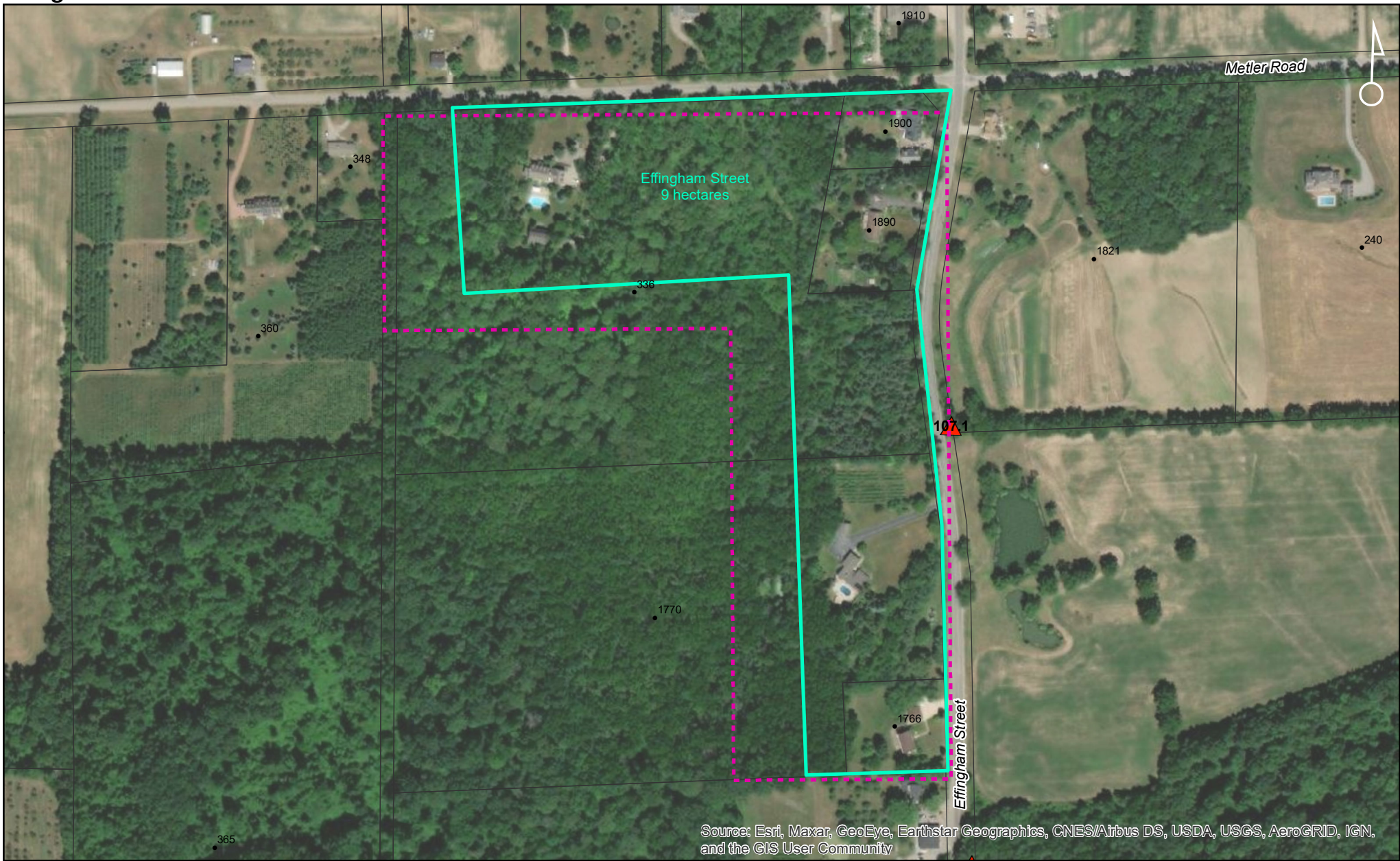
- Nil (0)
- Light (1-10)
- Moderate (11-40)
- Heavy (41-100)
- Severe (101+)

▭ PelhamSprayBlocks_Feb23

▭ PelhamSprayBlocks_Original

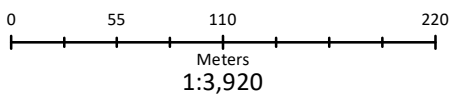
▭ AssessmentParcels

Effingham Street



Source: Esri, Maxar, GeoEye, Earthstar Geographics, CNES/Airbus DS, USDA, USGS, AeroGRID, IGN, and the GIS User Community

Town of Pelham LDD Moth Aerial Spray Program



NAD 1983 UTM Zone 17N

Produced by Lallemand Inc./BioForest

2022 Defoliation Forecasts

Forest Plots (em/ha)

- ▲ Nil (0)
- ▲ Light (1-1250)
- ▲ Moderate (1251-3750)
- ▲ Heavy (3751-5000)
- ▲ Severe (5001+)

Street Plots (em/tree)

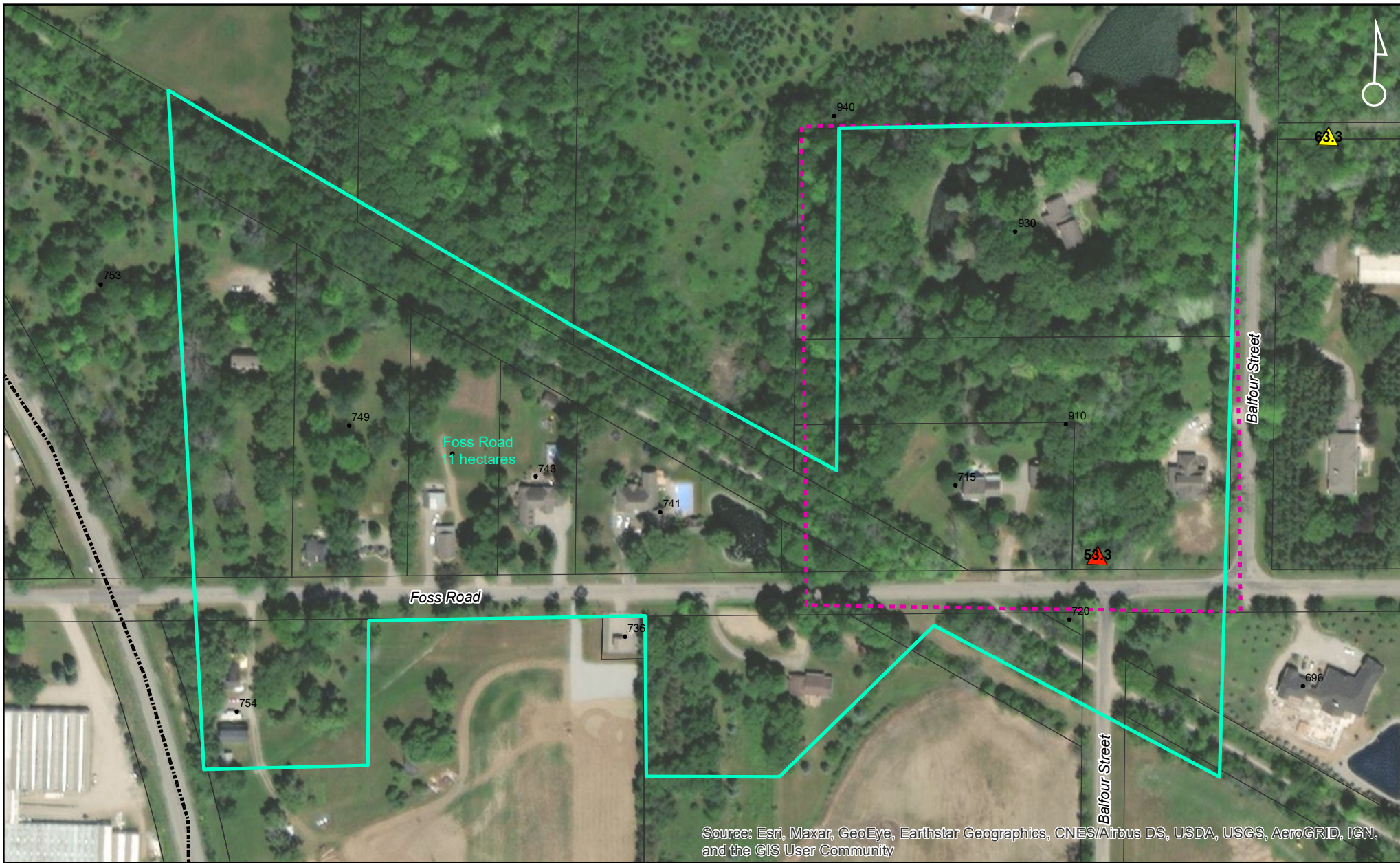
- Nil (0)
- Light (1-10)
- Moderate (11-40)
- Heavy (41-100)
- Severe (101+)

▭ PelhamSprayBlocks_Feb23

▭ PelhamSprayBlocks_Original

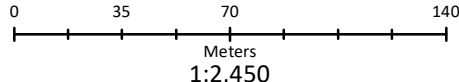
▭ AssessmentParcels

Foss Road



Source: Esri, Maxar, GeoEye, Earthstar Geographics, CNES/Airbus DS, USDA, USGS, AeroGRID, IGN, and the GIS User Community

Town of Pelham LDD Moth Aerial Spray Program



NAD 1983 UTM Zone 17N

Produced by Lallemand Inc./BioForest

2022 Defoliation Forecasts

Forest Plots (em/ha)

- ▲ Nil (0)
- ▲ Light (1-1250)
- ▲ Moderate (1251-3750)
- ▲ Heavy (3751-5000)
- ▲ Severe (5001+)

Street Plots (em/tree)

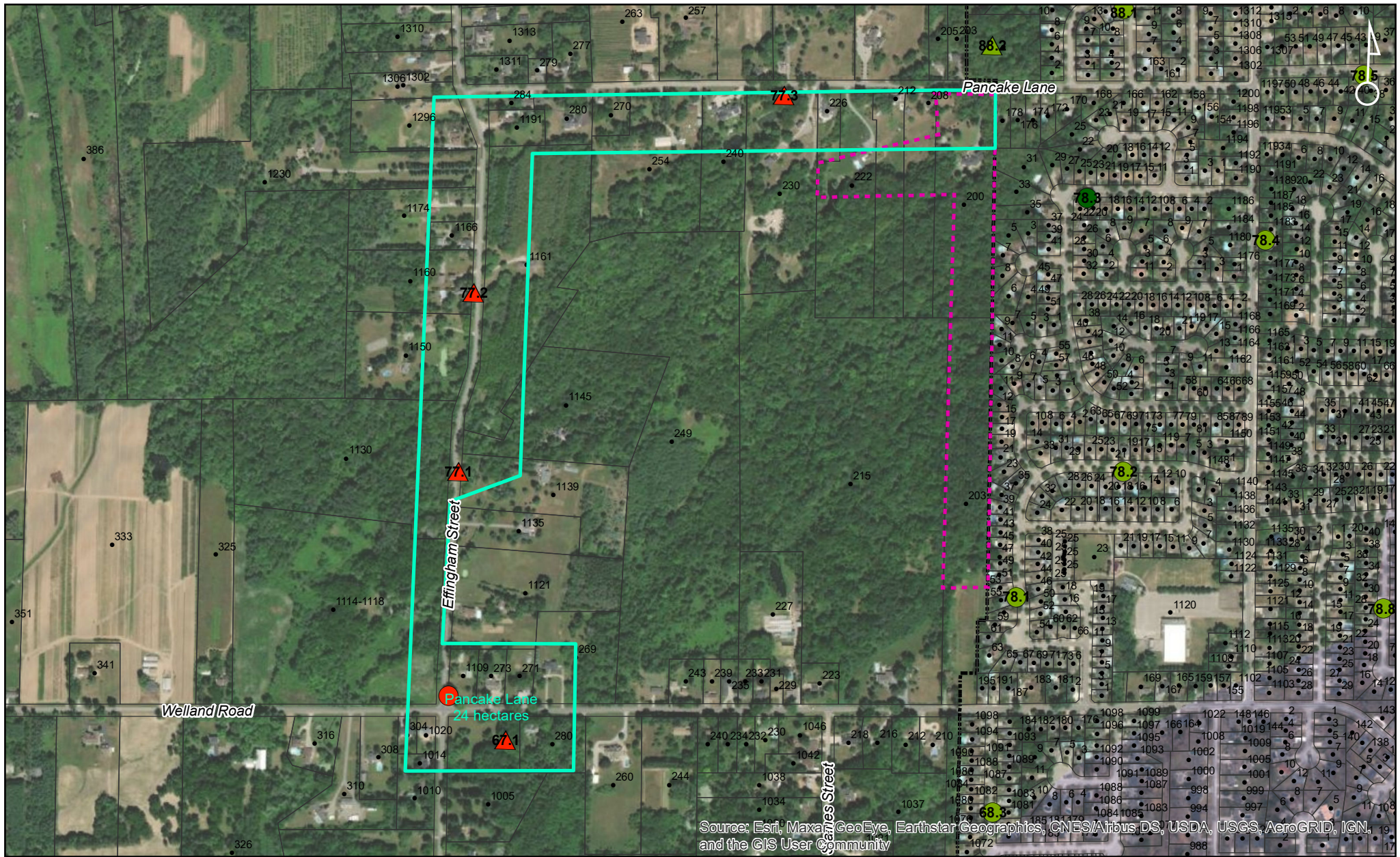
- Nil (0)
- Light (1-10)
- Moderate (11-40)
- Heavy (41-100)
- Severe (101+)

▭ PelhamSprayBlocks_Feb23

▭ PelhamSprayBlocks_Original

▭ AssessmentParcels

Pancake Lane



Source: Esri, Maxar, GeoEye, Earthstar Geographics, CNES/Airbus DS, USDA, USGS, AeroGRID, IGN, and the GIS User Community

Town of Pelham
LDD Moth Aerial Spray Program

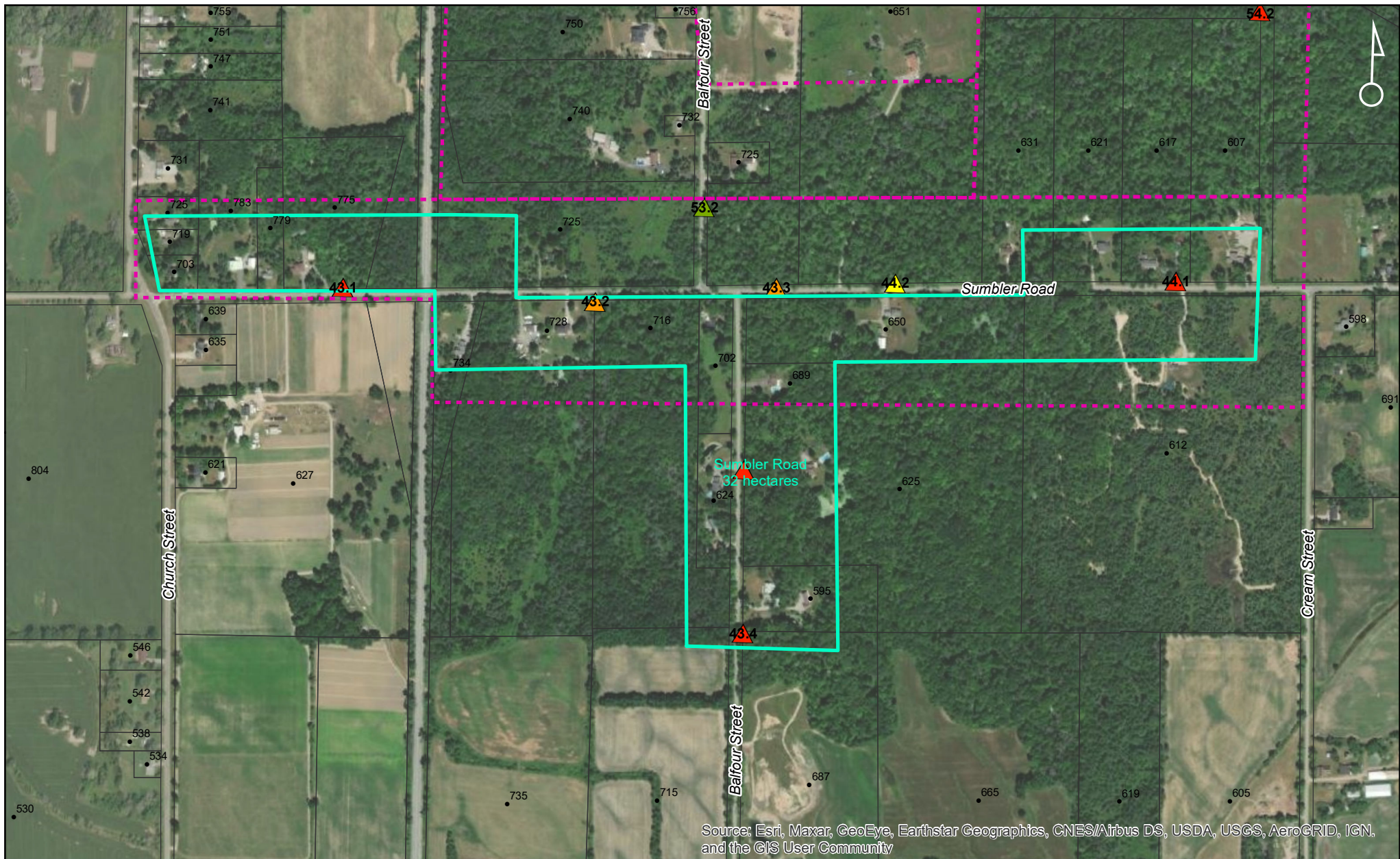
0 125 250 500
 Meters
 1:8,360

NAD 1983 UTM Zone 17N
 Produced by Lallemand Inc./BioForest

2022 Defoliation Forecasts

Forest Plots (em/ha)	Street Plots (em/tree)	PelhamSprayBlocks_Feb23
▲ Nil (0)	● Nil (0)	▭ PelhamSprayBlocks_Original
▲ Light (1-1250)	● Light (1-10)	▭ AssessmentParcels
▲ Moderate (1251-3750)	● Moderate (11-40)	
▲ Heavy (3751-5000)	● Heavy (41-100)	
▲ Severe (5001+)	● Severe (101+)	

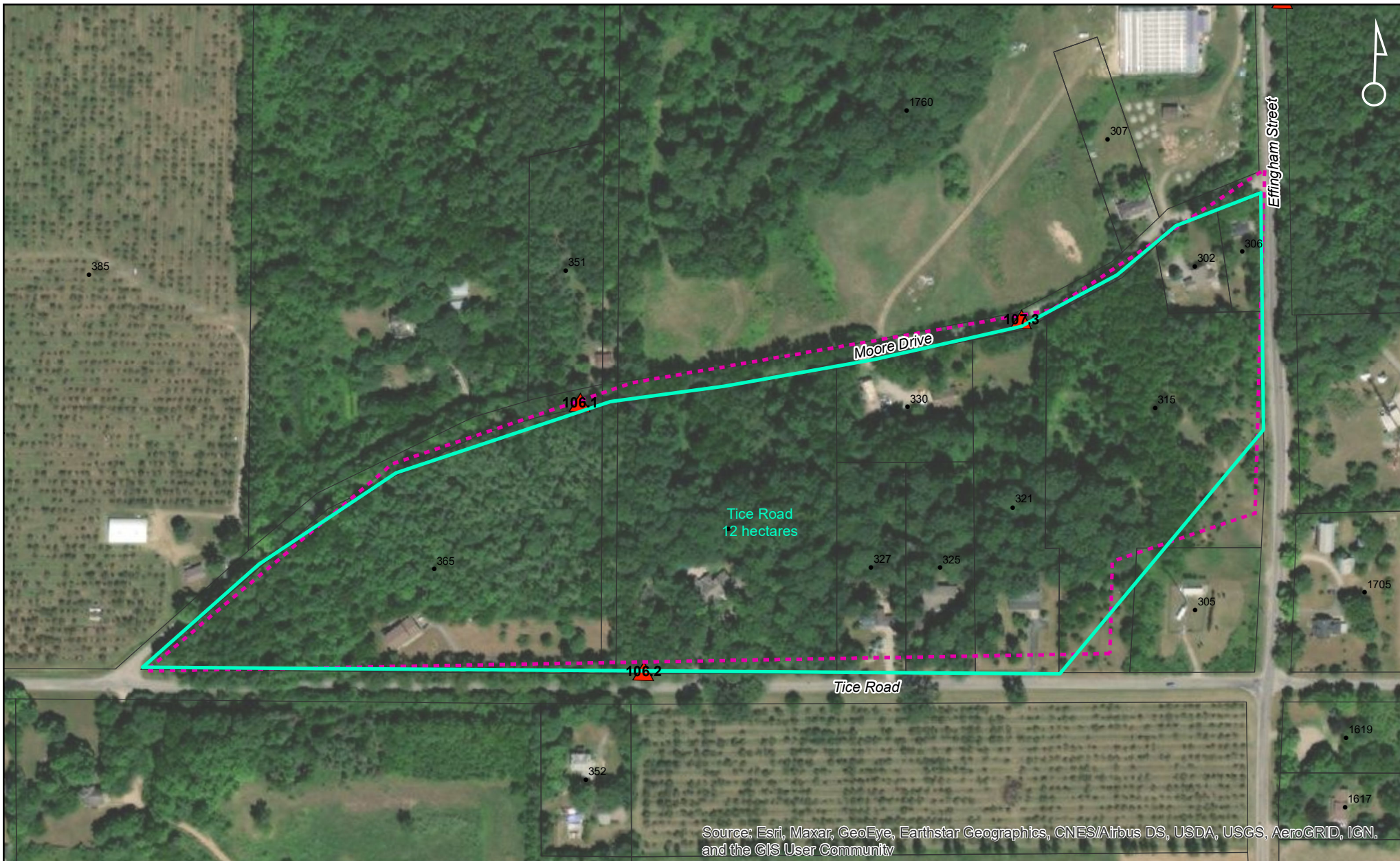
Sumbler Road



Source: Esri, Maxar, GeoEye, Earthstar Geographics, CNES/Airbus DS, USDA, USGS, AeroGRID, IGN, and the GIS User Community

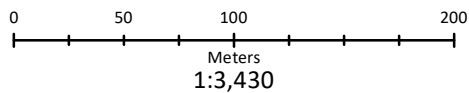
<h2>Town of Pelham</h2> <h3>LDD Moth Aerial Spray Program</h3>		<h3>2022 Defoliation Forecasts</h3>		
		Forest Plots (em/ha) <ul style="list-style-type: none"> ▲ Nil (0) ▲ Light (1-1250) ▲ Moderate (1251-3750) ▲ Heavy (3751-5000) ▲ Severe (5001+) 	Street Plots (em/tree) <ul style="list-style-type: none"> ● Nil (0) ● Light (1-10) ● Moderate (11-40) ● Heavy (41-100) ● Severe (101+) 	<ul style="list-style-type: none"> PelhamSprayBlocks_Feb23 PelhamSprayBlocks_Original AssessmentParcels
<p>NAD 1983 UTM Zone 17N Produced by Lallemand Inc./BioForest</p>				

Tice Road



Source: Esri, Maxar, GeoEye, Earthstar Geographics, CNES/Airbus DS, USDA, USGS, AeroGRID, IGN, and the GIS User Community

Town of Pelham LDD Moth Aerial Spray Program



NAD 1983 UTM Zone 17N

Produced by Lallemand Inc./BioForest

2022 Defoliation Forecasts

Forest Plots (em/ha)

- ▲ Nil (0)
- ▲ Light (1-1250)
- ▲ Moderate (1251-3750)
- ▲ Heavy (3751-5000)
- ▲ Severe (5001+)

Street Plots (em/tree)

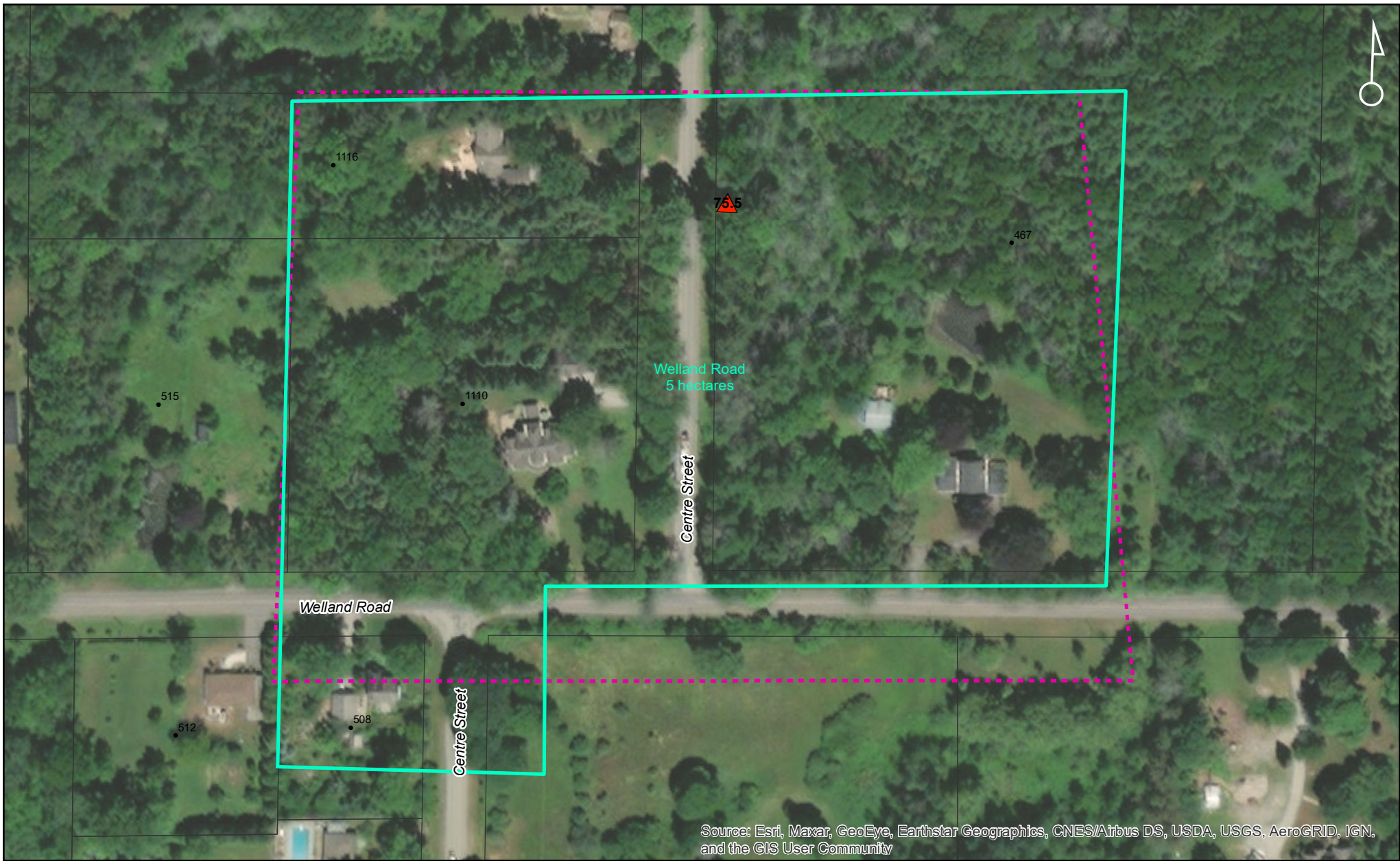
- Nil (0)
- Light (1-10)
- Moderate (11-40)
- Heavy (41-100)
- Severe (101+)

▭ PelhamSprayBlocks_Feb23

▭ PelhamSprayBlocks_Original

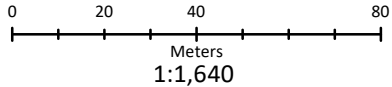
▭ AssessmentParcels

Welland Road



Source: Esri, Maxar, GeoEye, Earthstar Geographics, CNES/Airbus DS, USDA, USGS, AeroGRID, IGN, and the GIS User Community

Town of Pelham LDD Moth Aerial Spray Program



NAD 1983 UTM Zone 17N

Produced by Lallemand Inc./BioForest

2022 Defoliation Forecasts

Forest Plots (em/ha)

- ▲ Nil (0)
- ▲ Light (1-1250)
- ▲ Moderate (1251-3750)
- ▲ Heavy (3751-5000)
- ▲ Severe (5001+)

Street Plots (em/tree)

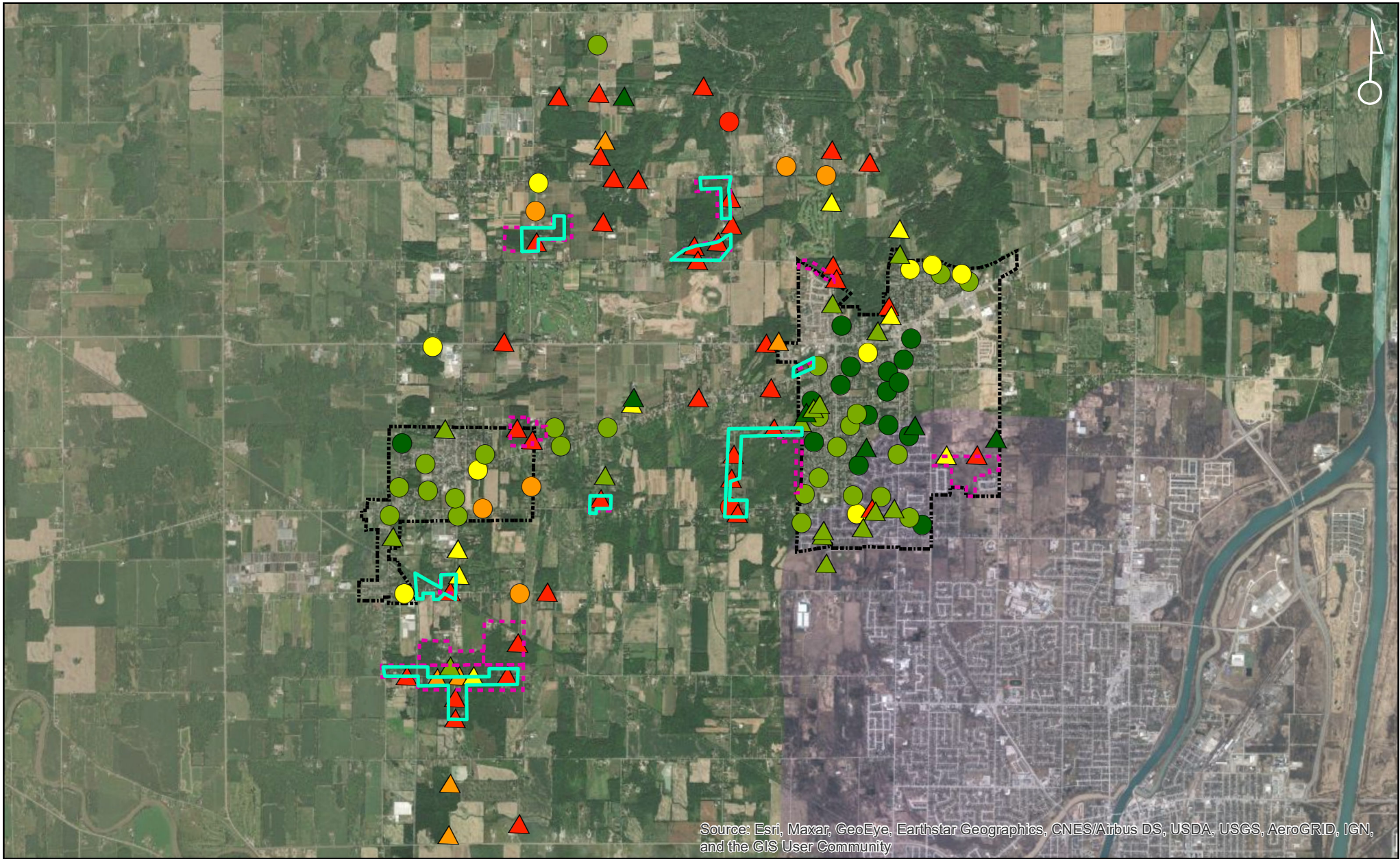
- Nil (0)
- Light (1-10)
- Moderate (11-40)
- Heavy (41-100)
- Severe (101+)

▭ PelhamSprayBlocks_Feb23

▭ PelhamSprayBlocks_Original

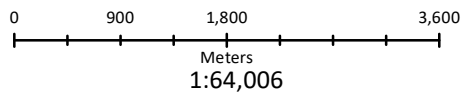
▭ AssessmentParcels

Overview



Source: Esri, Maxar, GeoEye, Earthstar Geographics, CNES/Airbus DS, USDA, USGS, AeroGRID, IGN, and the GIS User Community

Town of Pelham LDD Moth Aerial Spray Program



NAD 1983 UTM Zone 17N

Produced by Lallemand Inc./BioForest

2022 Defoliation Forecasts

Forest Plots (em/ha)

- ▲ Nil (0)
- ▲ Light (1-1250)
- ▲ Moderate (1251-3750)
- ▲ Heavy (3751-5000)
- ▲ Severe (5001+)

Street Plots (em/tree)

- Nil (0)
- Light (1-10)
- Moderate (11-40)
- Heavy (41-100)
- Severe (101+)

▭ PelhamSprayBlocks_Feb23

▭ PelhamSprayBlocks_Original