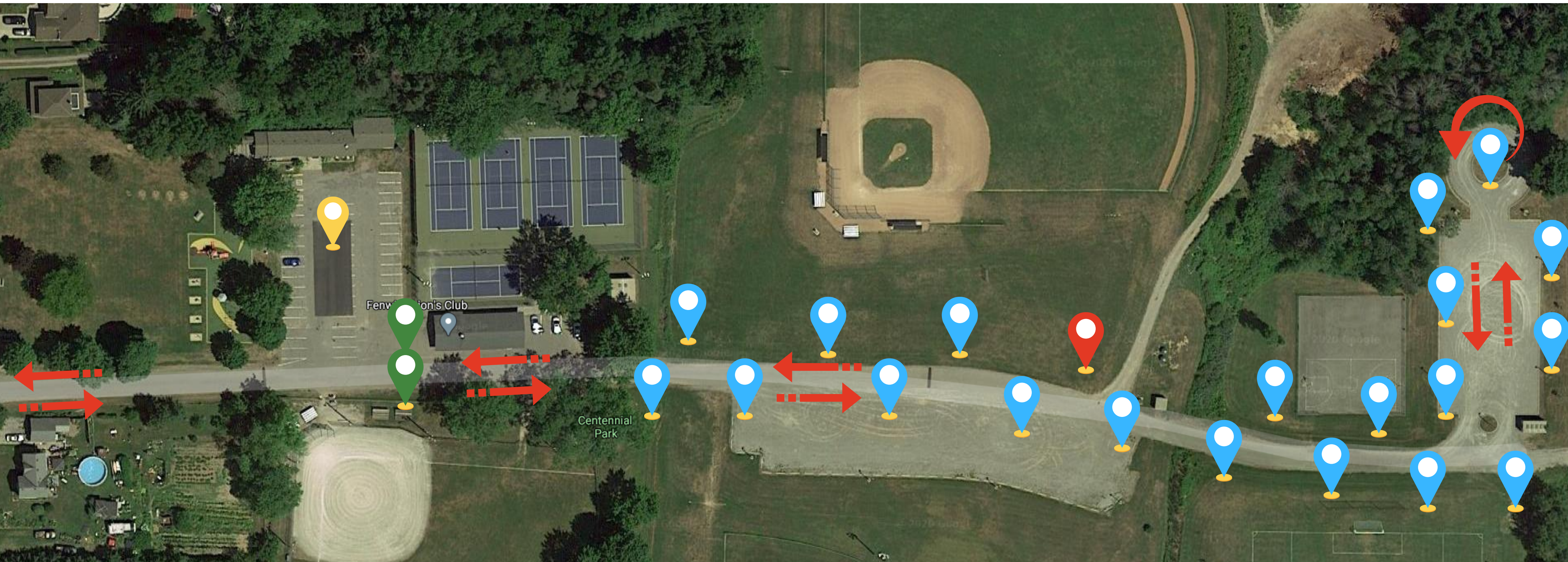


Drive Thru Christmas Parade 2020







Drive Thru Parade concept has all parade "floats" as stationary points along a route. Vehicles (spectators) then move their way along the parade route.

One way traffic flow only - from Church Street (feeds from both Canboro & Foss) Exit from park - right hand turn only from Centennial Park. Residents would be able to participate in a closed access area. Residents must access the parade in a vehicle. Vehicles would be required to use four way flashers when entering line and moving through the parade route. Vehicles must maintain 10km speed in parade space. **No limitation on number of participants as drive through event.**

Inclusions:

- Letters to Santa Drop off point
- Donation Drop off point
- Activity Sheets
- Scavenger Hunt on Route
- Promo bags for cars - inclusions from "floats"
- Audio/pdf file for descriptions/music

-  Parade Start Point/Drop Off
-  Locations for "Floats" along route
sections are up to 40' for displays
-  Location of Fire Department Float for egress point
-  Parking area for parade float support