



# Report of Regional Councillor

---

Diana Huson

# Overview of Updates

Niagara Regional Police Services

Natural Environmental Work Program

Child Care Motion

KPMG Sustainability Review

AMO Conference

Waste Management Reminder

# Niagara Regional Police Services

Presentation delivered by Chief MacCulloch & Tara McKendrick, CMHA, to provide information respecting the NRP's culture of diversity, equity and inclusion. Topics of the presentation included:

- Culture of Diversity, Equity and Inclusion
- Chief of Police - Community Inclusion Council (CoP-CIC)
- Focused Recruiting Efforts
- Use of Force Continuum
- Accountability/Oversight
- Calls for Service - Mental Health
- ***Mobile Crisis Rapid Response Team (MCRRT)***
- Situational Tables/Community Safety Well Being Plan
- Foot Patrol
- Calls for Service
- Strategic Plan Aligns with Council Priorities
- Funding Sources/Operating Budget by Service
- Police Operations Breakdown by Functional Area
- Body Worn Cameras
- Collection of Identifying Information (Street Checks)

# Planning

## Natural Environment Work Program

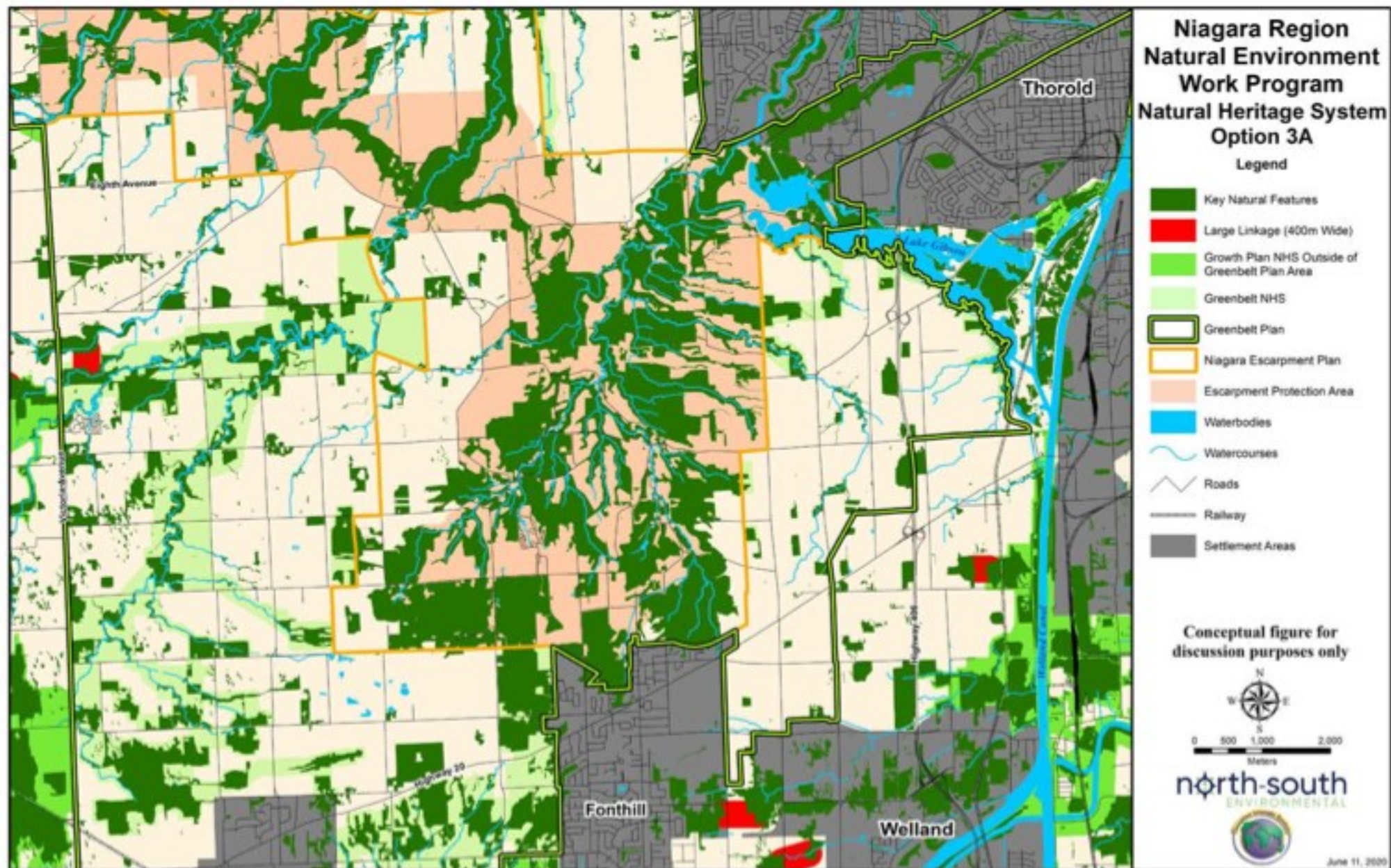
4

Working towards establishing a direction for 1) the natural heritage system and 2) water resource system. Currently on Phase 4: Identification and Evaluation of Options

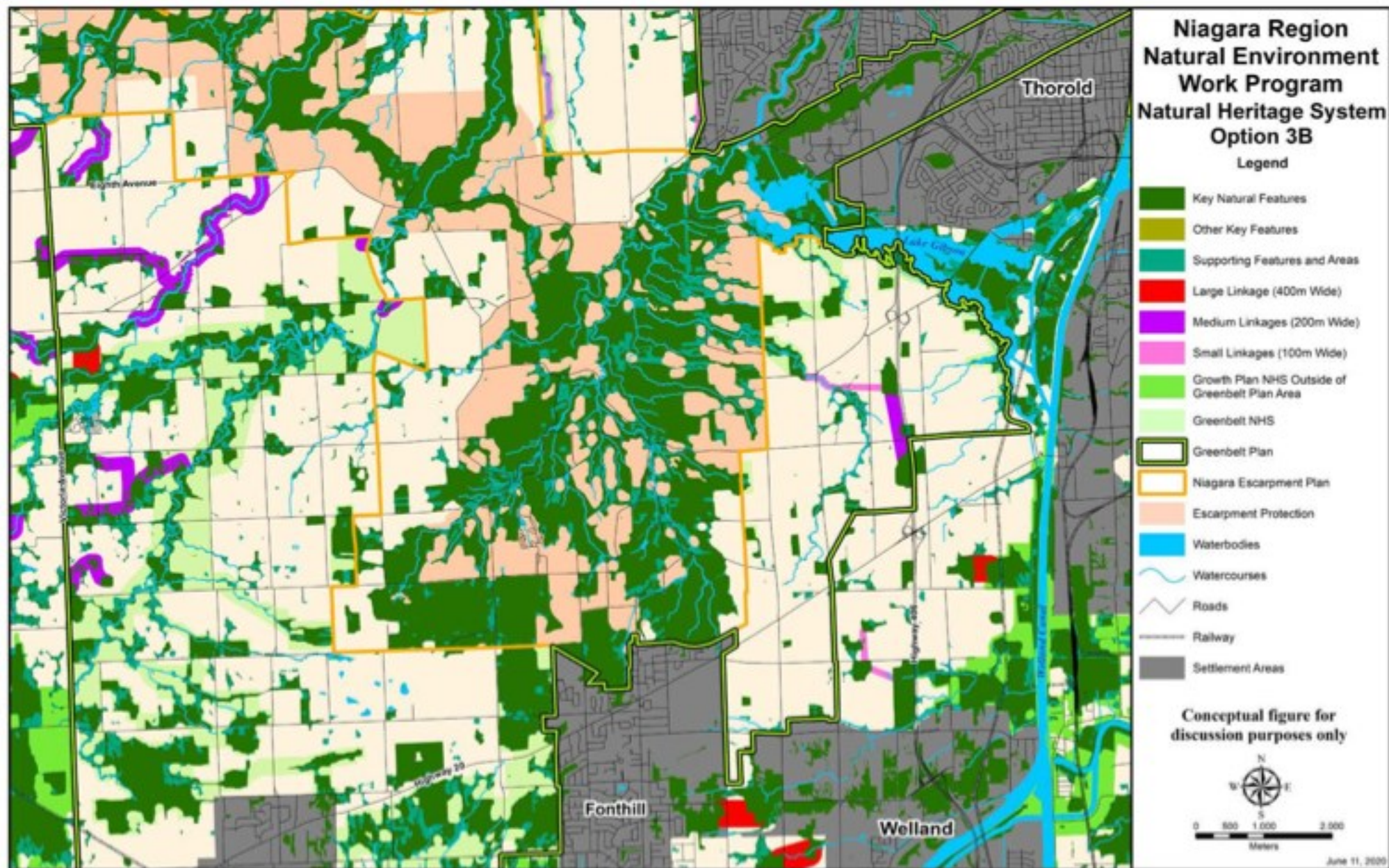
- Initiating a 2<sup>nd</sup> point of engagement with the public, stakeholders and Indigenous groups
- Options need to “conform” with provincial requirements but Council has shown an interest in adopting a more robust mapping strategy.

Represents a systems approach to managing our green spaces instead of considering these sites in isolation of one another.









# Motion

## Child Care

7

### Child Care Motion

WHEREAS the Region of Niagara and Niagara's twelve local area municipalities jointly declared a state of emergency on April 3, 2020 to protect the health of our communities;

WHEREAS the COVID-19 pandemic has taken a destructive toll on Niagara's economy, resulting in business closures, job losses or a reduction of wages for Niagara residents and families;

WHEREAS women have been disproportionately impacted by these economic impacts, or have had to leave the labour market altogether in order to provide child care or home-schooling;

WHEREAS the provision of child care benefits employers, is proven to support economic recovery, but also leads to greater workforce participation by women and supports their return to the workforce;

WHEREAS the economic recovery of the Niagara Region and Ontario is dependent on families having access to safe, reliable, and affordable child care that incorporates early learning principles; and

WHEREAS a 2012 study on the economic value of child care identified that every dollar invested in child care in Ontario has a direct regional economic output of \$2.27.



# Motion

## Child Care

### Child Care Motion *Continued...*

8

NOW THEREFORE BE IT RESOLVED:

1. That the Niagara Region **REQUEST** that:
  1. The Government of Ontario prioritize children and child care as part of our overall post-pandemic recovery plan;
  2. The Government of Ontario develop, adequately fund and release publicly a comprehensive plan that can support families through the provision of licensed child care and early learning education; and
  3. The Government of Ontario and the Government of Canada work collaboratively to develop a National Child Care Strategy to make child care an essential part of our public infrastructure that can support and expedite economic recovery; and
2. That this motion **BE CIRCULATED** to those upper and single tier municipalities who are designated by the province as municipal service managers for childcare and local area MPPs and MPs.





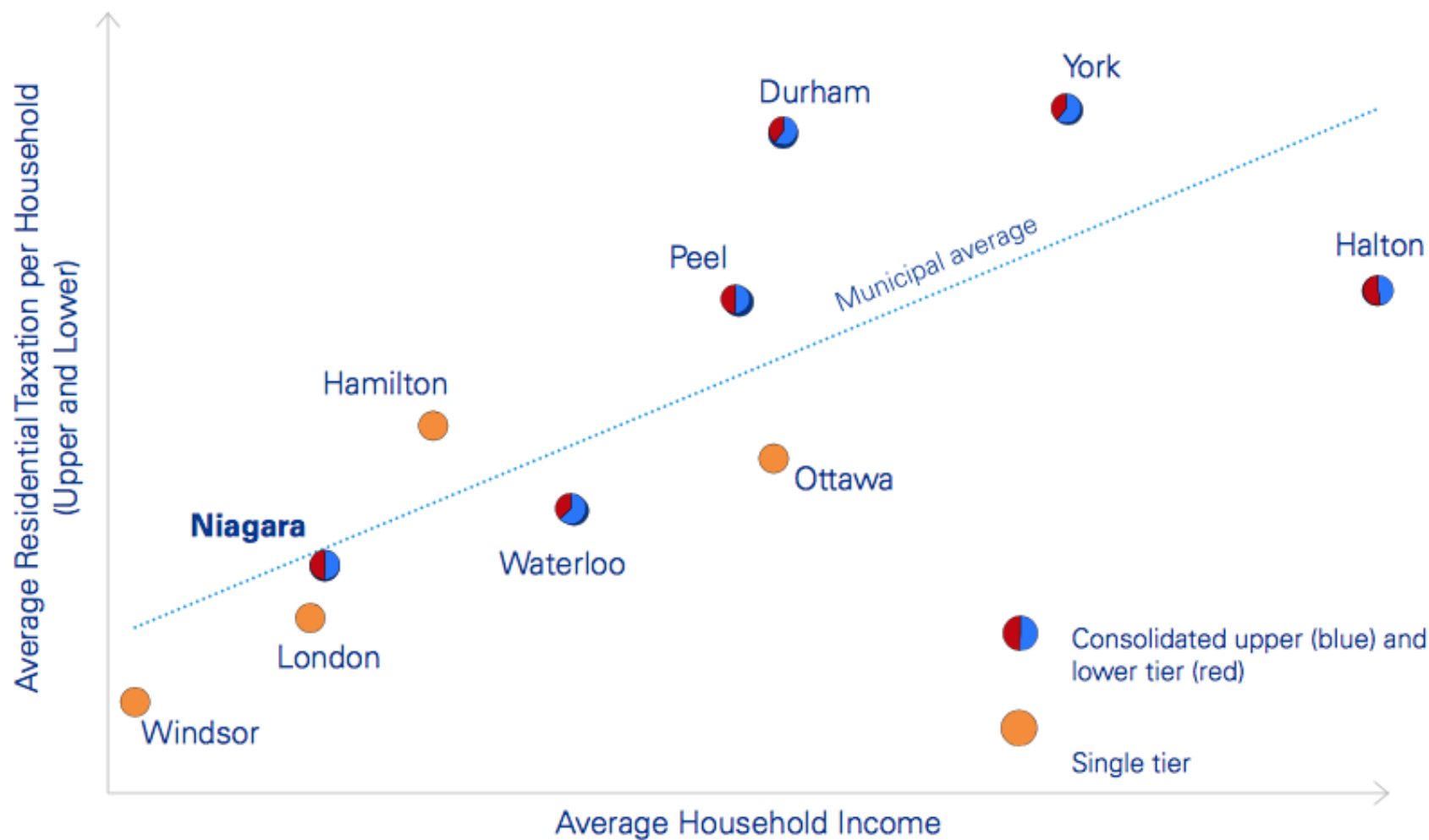
## Sustainability Review – Key Themes

9

- Even without the pandemic, the external environment will continue to challenge the Region's longer term sustainability
  - Regulatory changes
  - Infrastructure reinvestment requirements
  - Operating cost increases
- In comparison to larger Ontario municipalities, there does not appear to be an affordability issue with respect to upper and lower tier taxation
- A high proportion of the Region's services are either mandatory or essential, leaving limited opportunities for outright service reductions
- The majority of the Region's services appear to be delivered at a level considered to be "at standard"
- The Region's operating costs is generally consistent with other municipalities
- Where differences exist, these are primarily due to differences in the scope of services offered
- Corporate-level financial indicators, when compared to selected upper tier municipalities, are indicative of potential concerns

# Key Themes from the Review

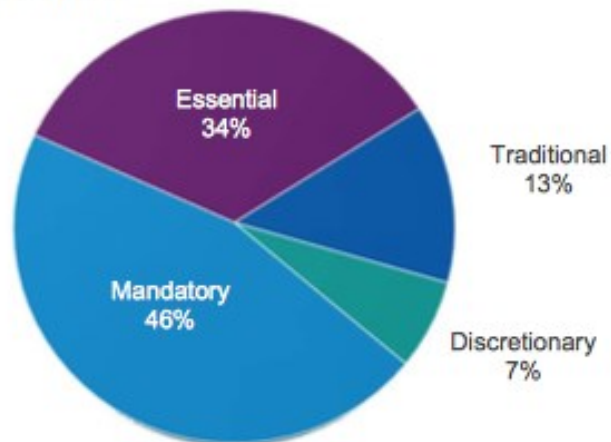
10



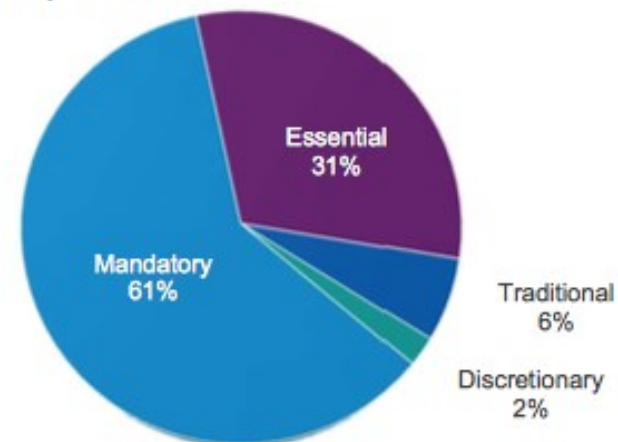
# Key Themes from the Review

11

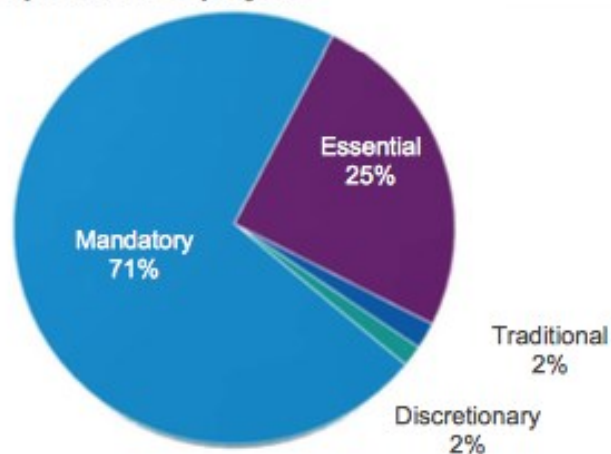
Number of Services



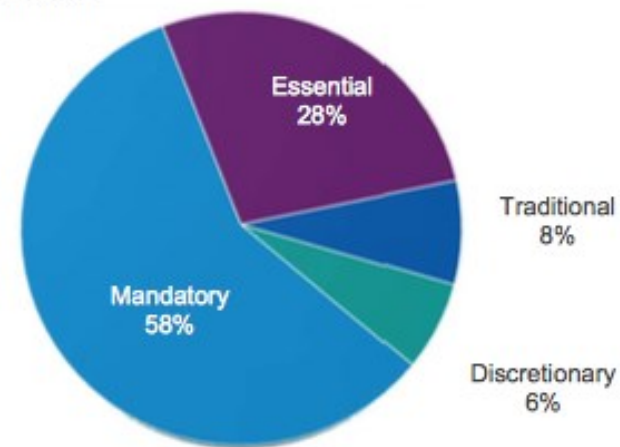
Operating Expenditures



Full-Time Equivalent Employees



Levy Requisition





## Key Themes from the Review

12

**2<sup>nd</sup> Lowest**

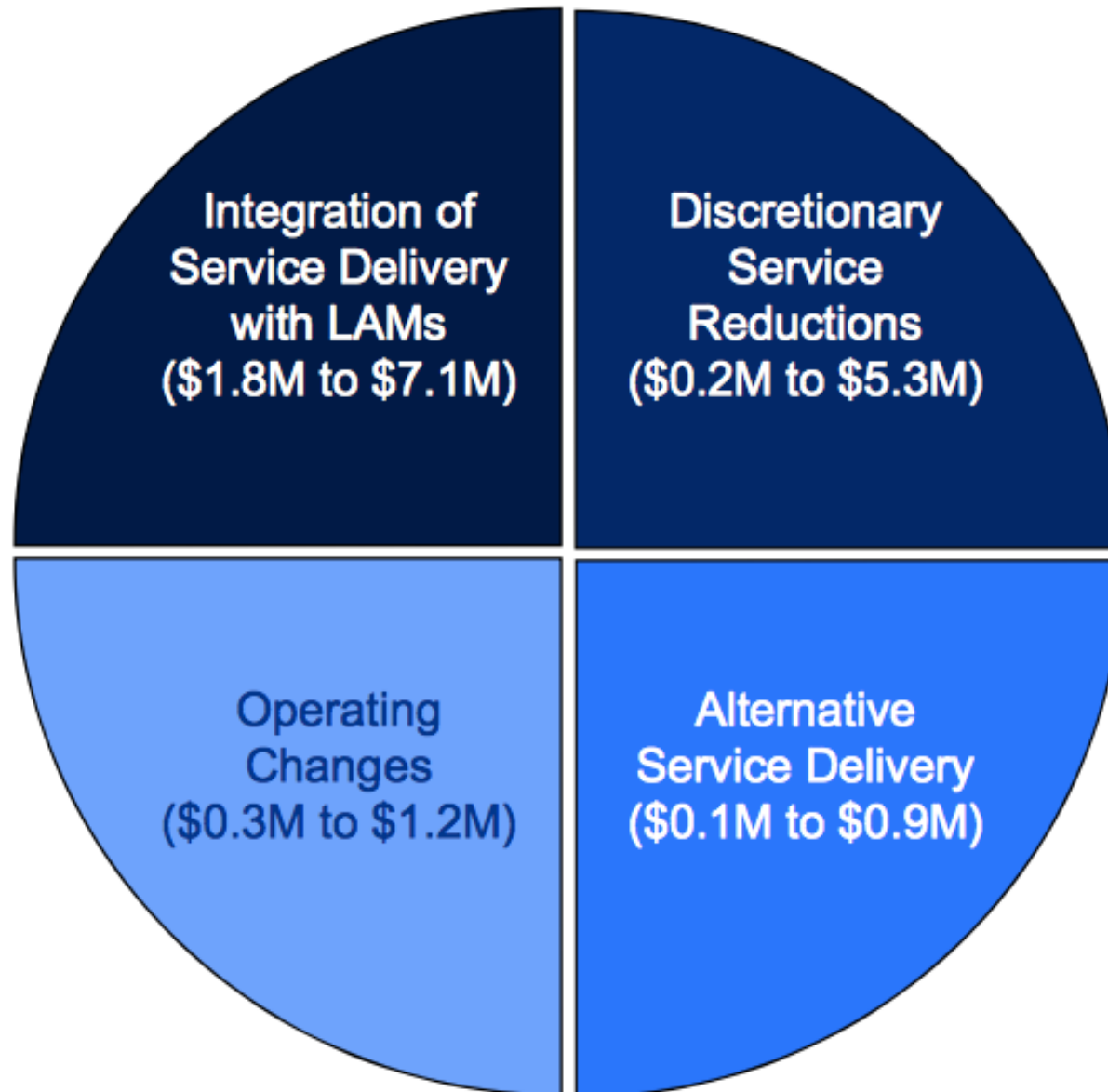
Reserves and reserve  
funds per household

**2<sup>nd</sup> Highest**

Long-term  
debt per household

**Lowest**

Capital additions as a  
percentage of  
amortization expense



# AMO Conference

14

## **August 17 – 19, 2020 Virtual Event**

- Minister's Forum
- Women's Leadership Forum – 1<sup>st</sup> offering
- Economic Recovery – Women, Education & Child Care
- Green Recovery – Active Transportation
- Broadband Internet – Rural and Urban Divide
- Recycling shift to Producer Responsibility



# AMO – Ontario Federation of Indigenous Friendship Centres

Council endorsed the signing of the joint AMO-OFIFC Declaration of Mutual Commitment and Friendship on behalf of the Region.

- Niagara Region works with local Indigenous Friendship Centres, the Fort Erie Native Friendship Centre and the Niagara Regional Native Centre
- Motion aimed to set a “leading example” in the area of Indigenous relations

*\*\*Circulated to municipalities*

# Waste Management Reminder

## October 19

### *Collection Service Changes*

Weekly garbage collection will shift starting on October 19.

- Weekly services will include organics and recycling.
- Bi-weekly services will include garbage (landfill).

Concerns over illegal dumping

- Fine has been increased from \$500 to \$1000

Questions?